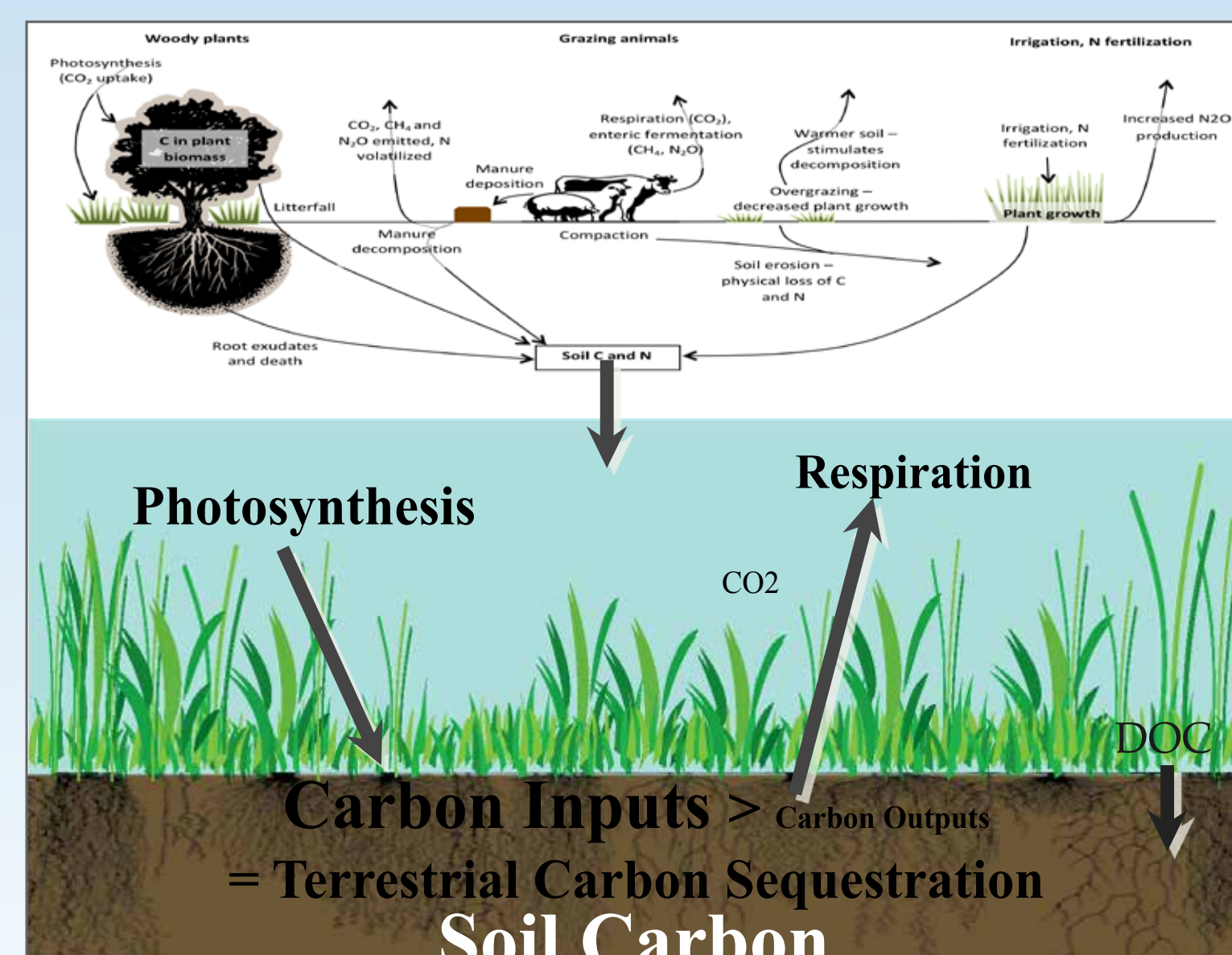
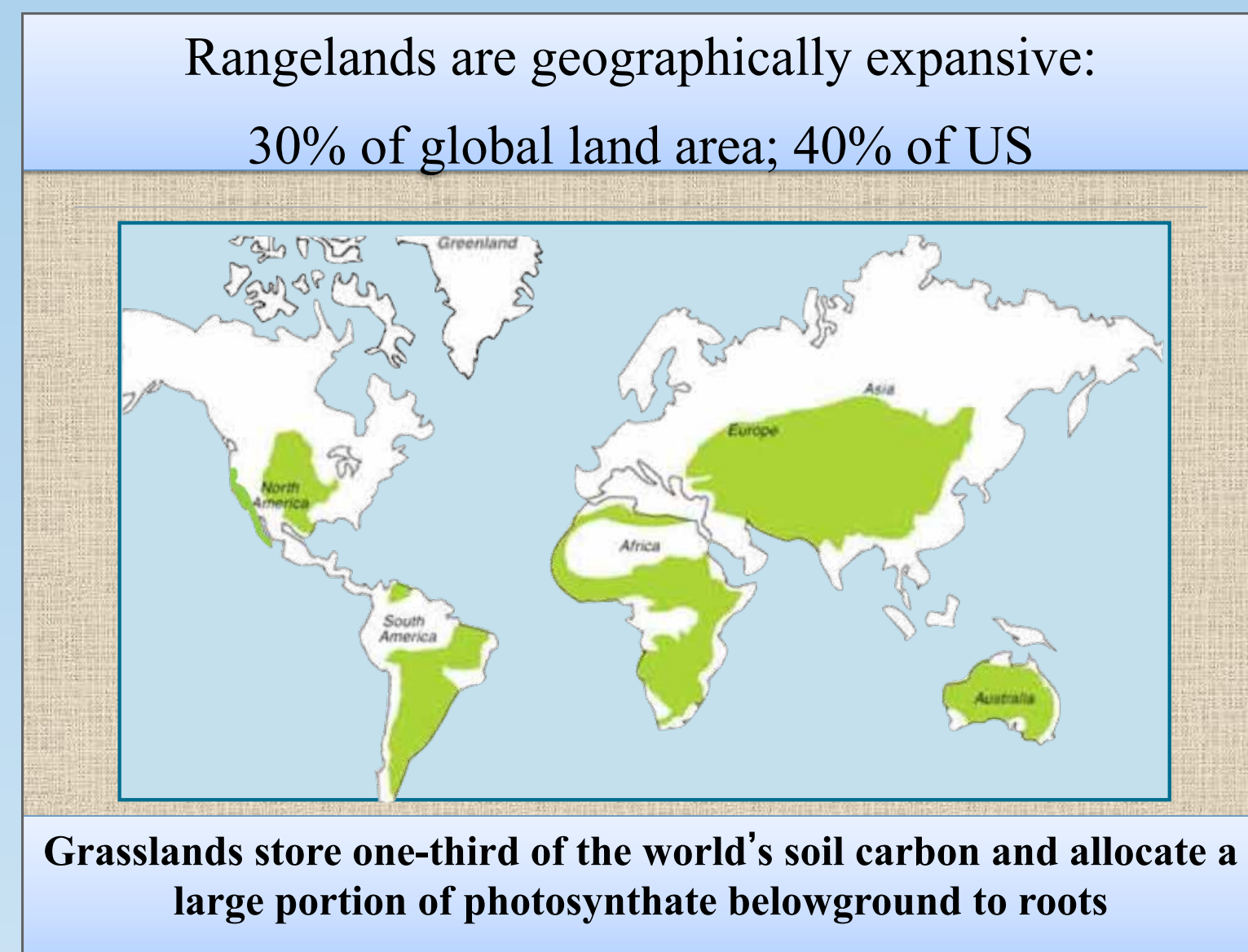
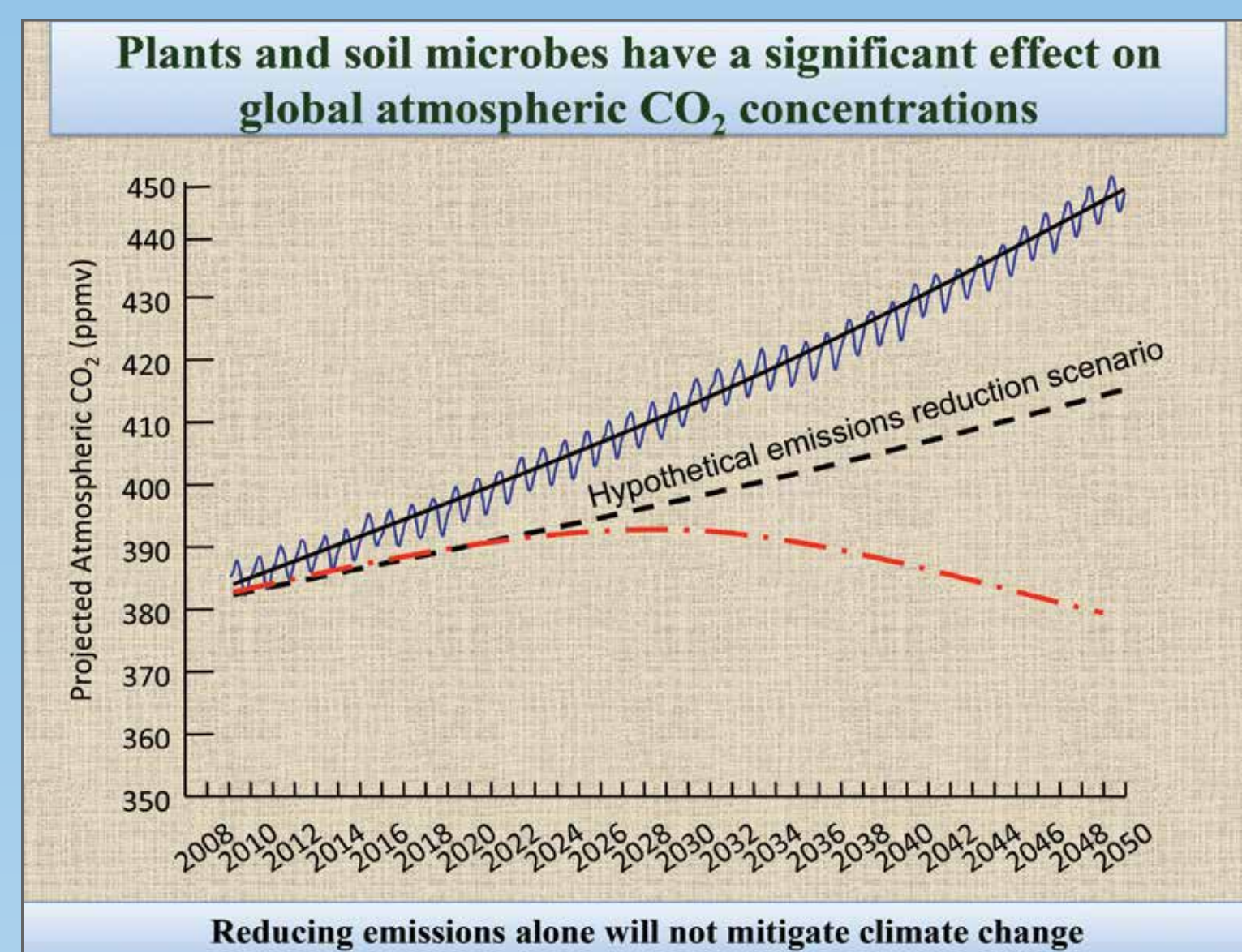
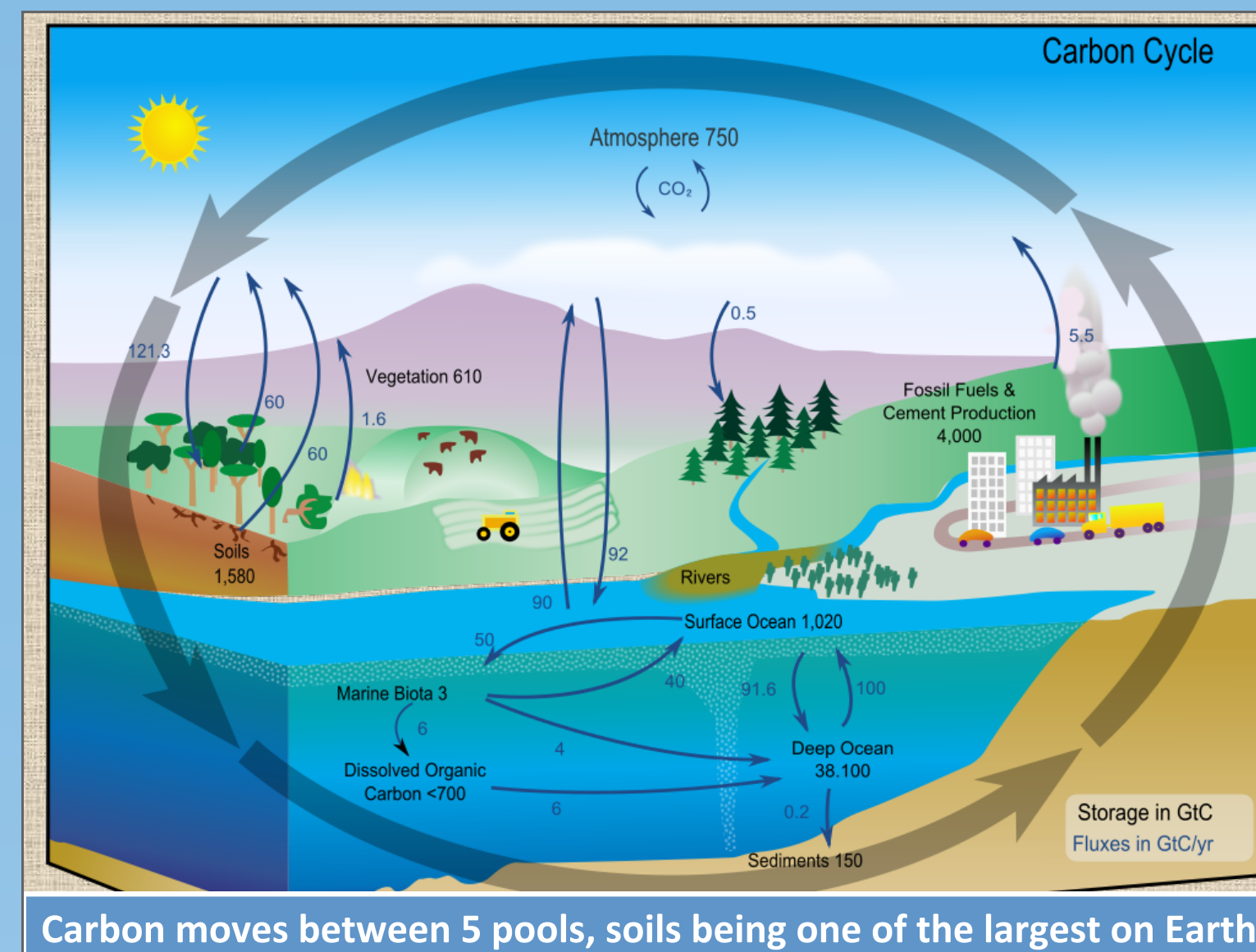


# Marin Carbon Project

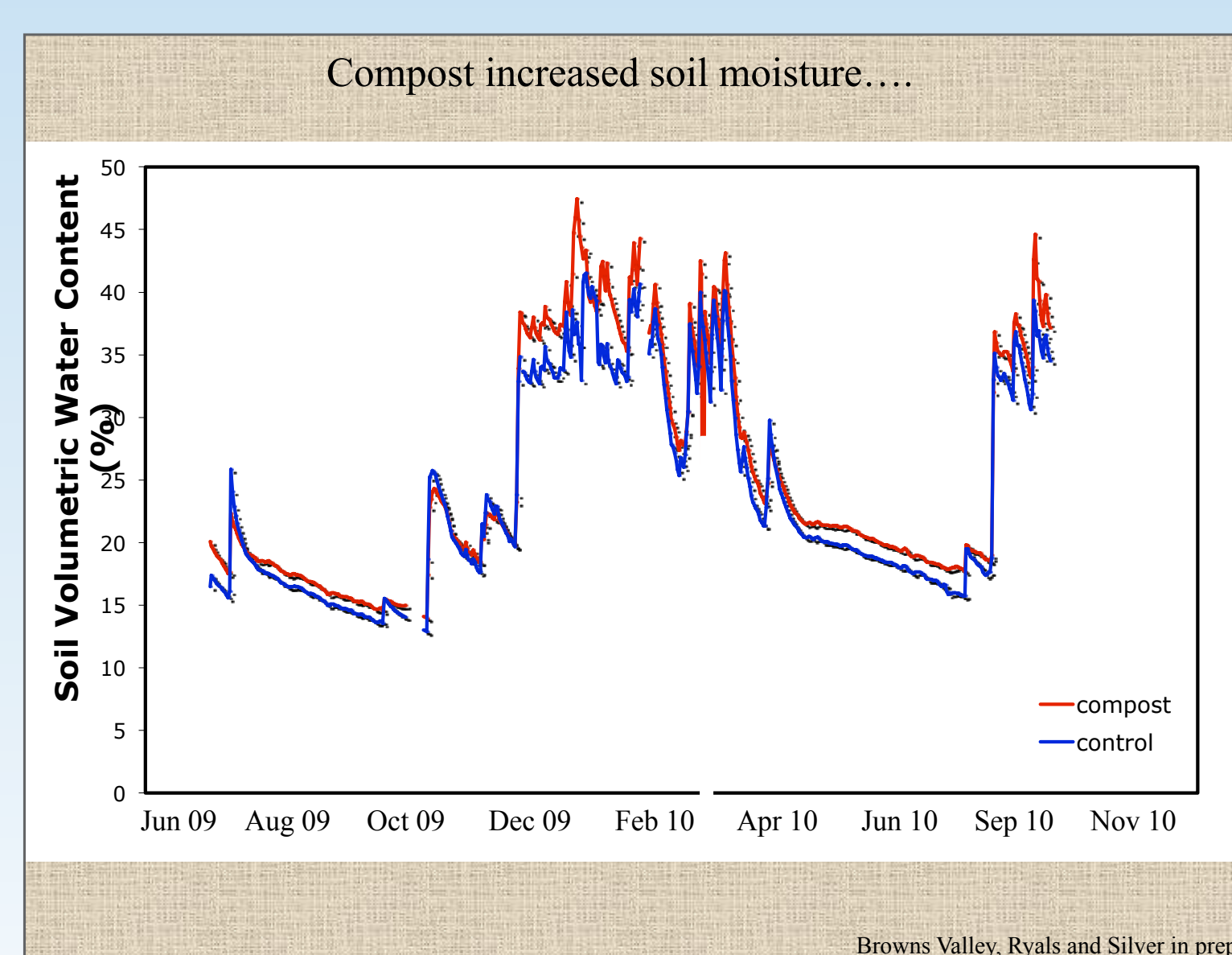
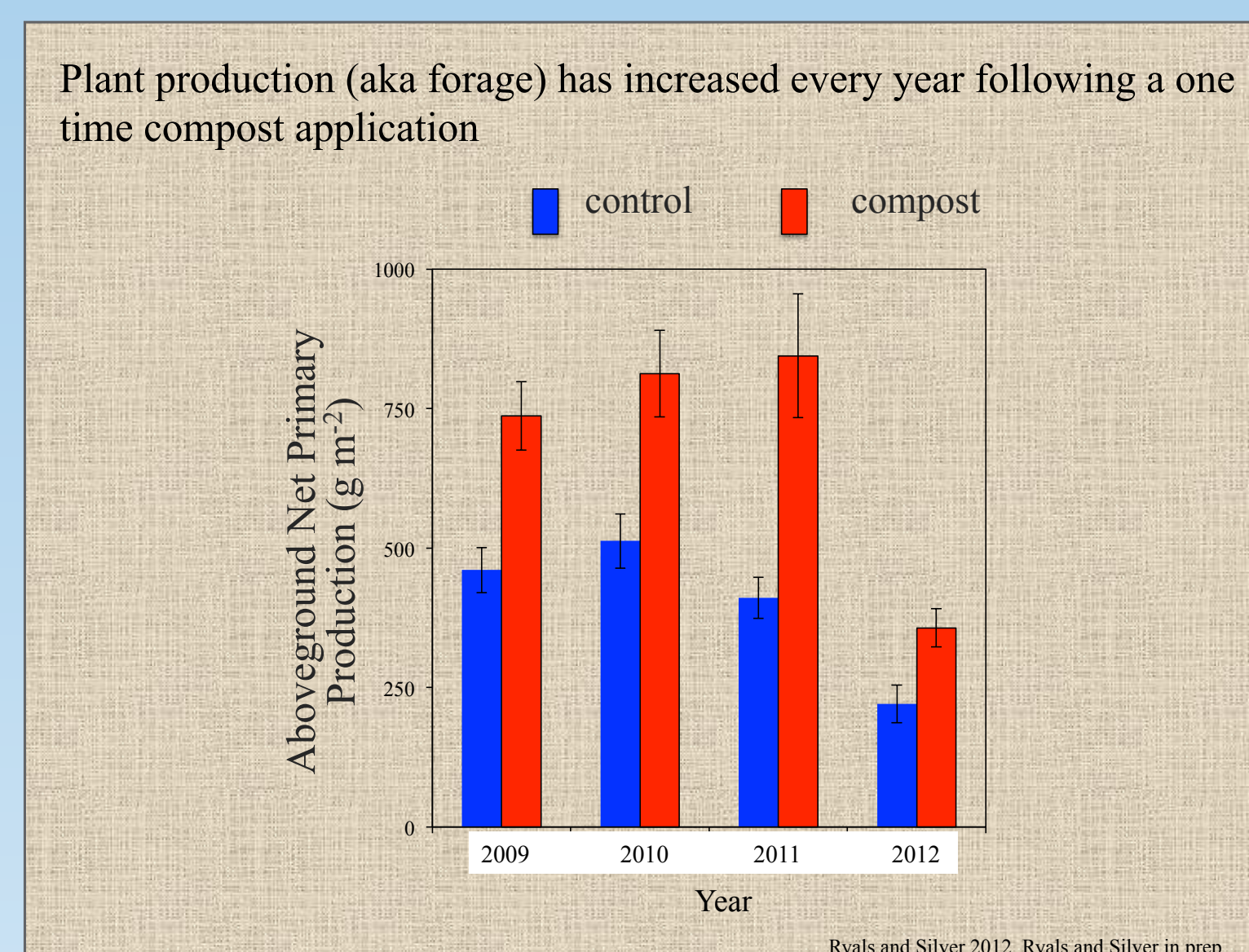
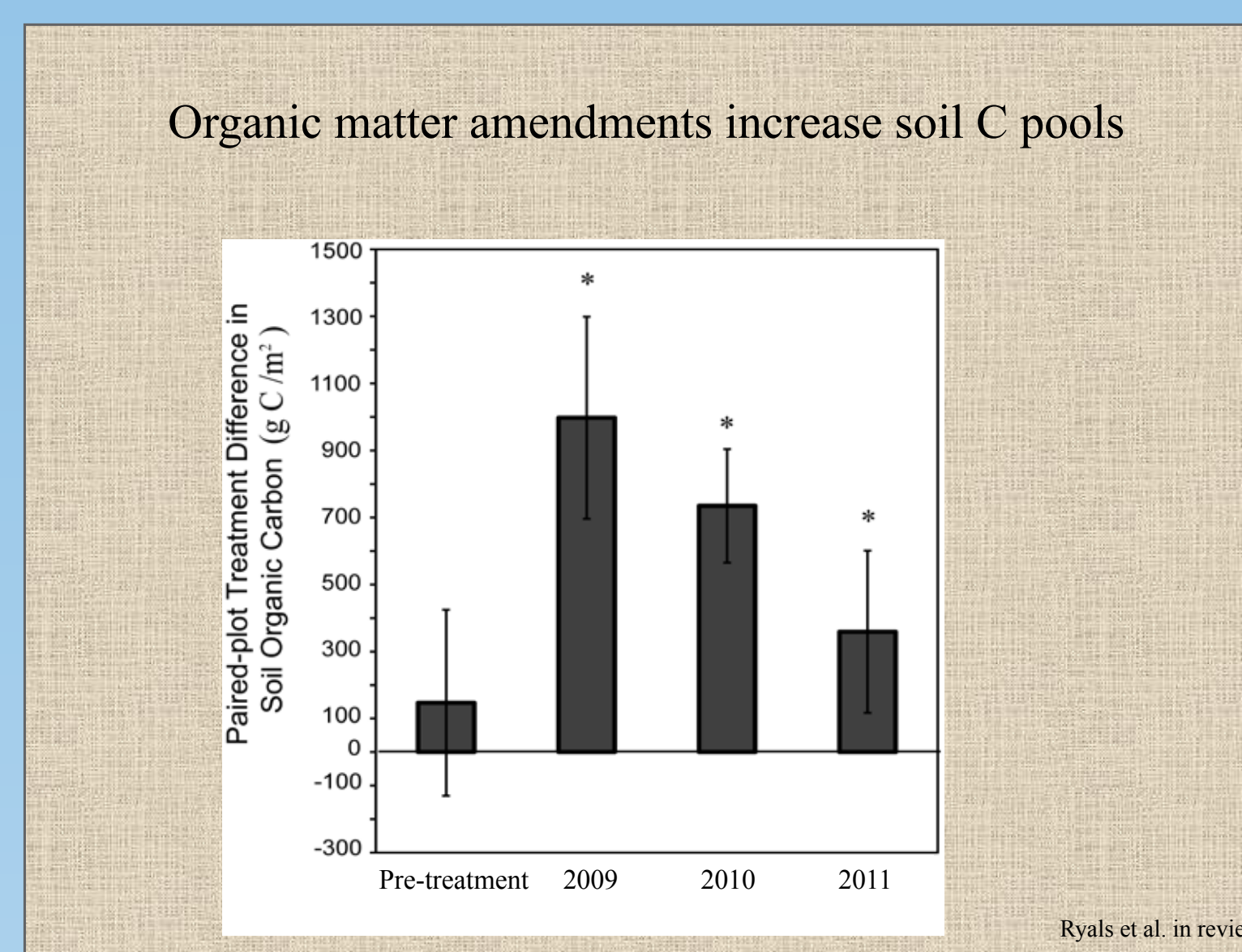
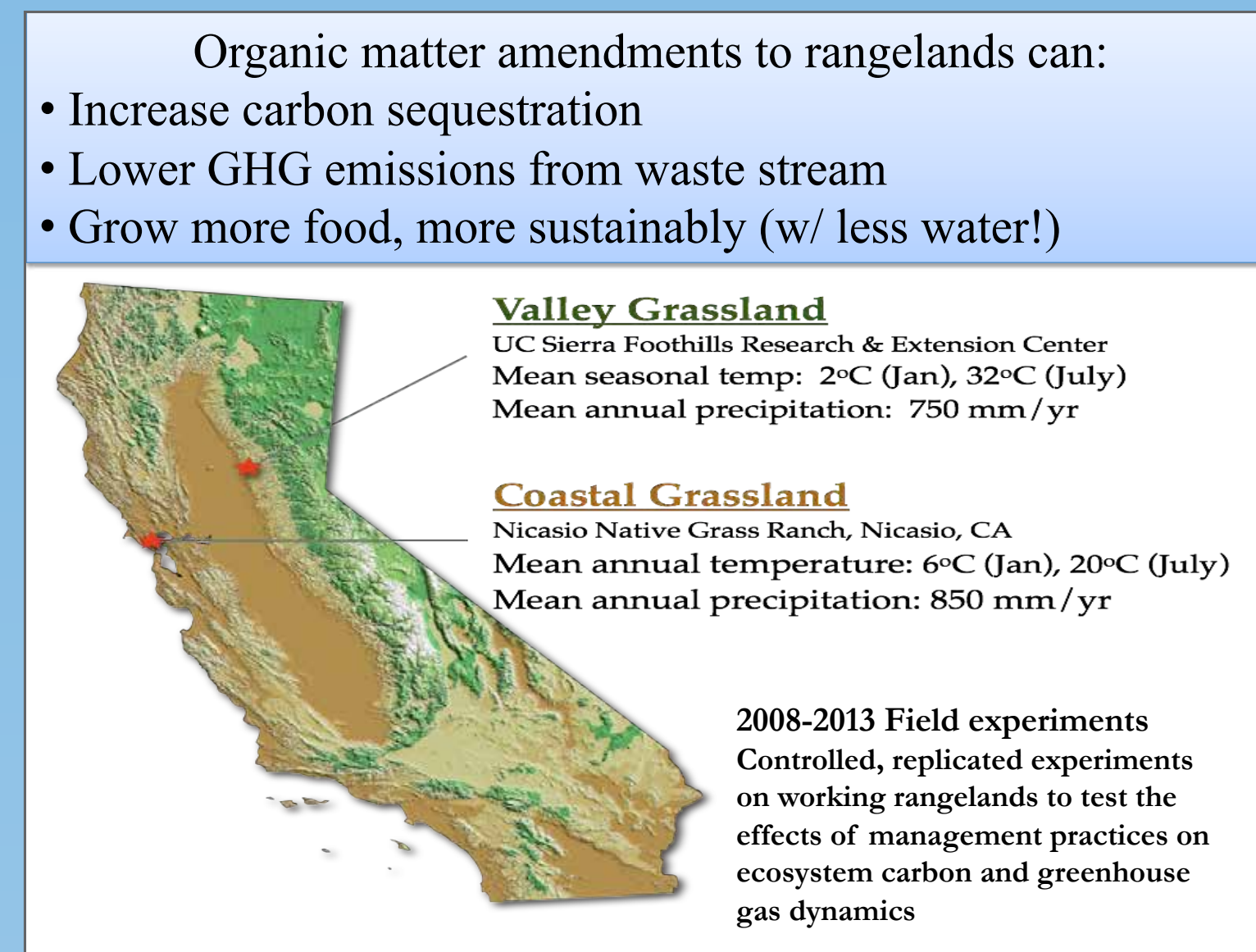
## Land Management Can Increase Carbon in Soils

A collaboration of Marin Agricultural Land Trust, Marin County Agricultural Commissioner, Marin Organic, Marin Resource Conservation District, Natural Resources Conservation Service (USDA), Nicasio Native Grass Ranch, UC Berkeley, UC Cooperative Extension (in partnership with the Carbon Cycle Institute and Environmental Defense Fund)

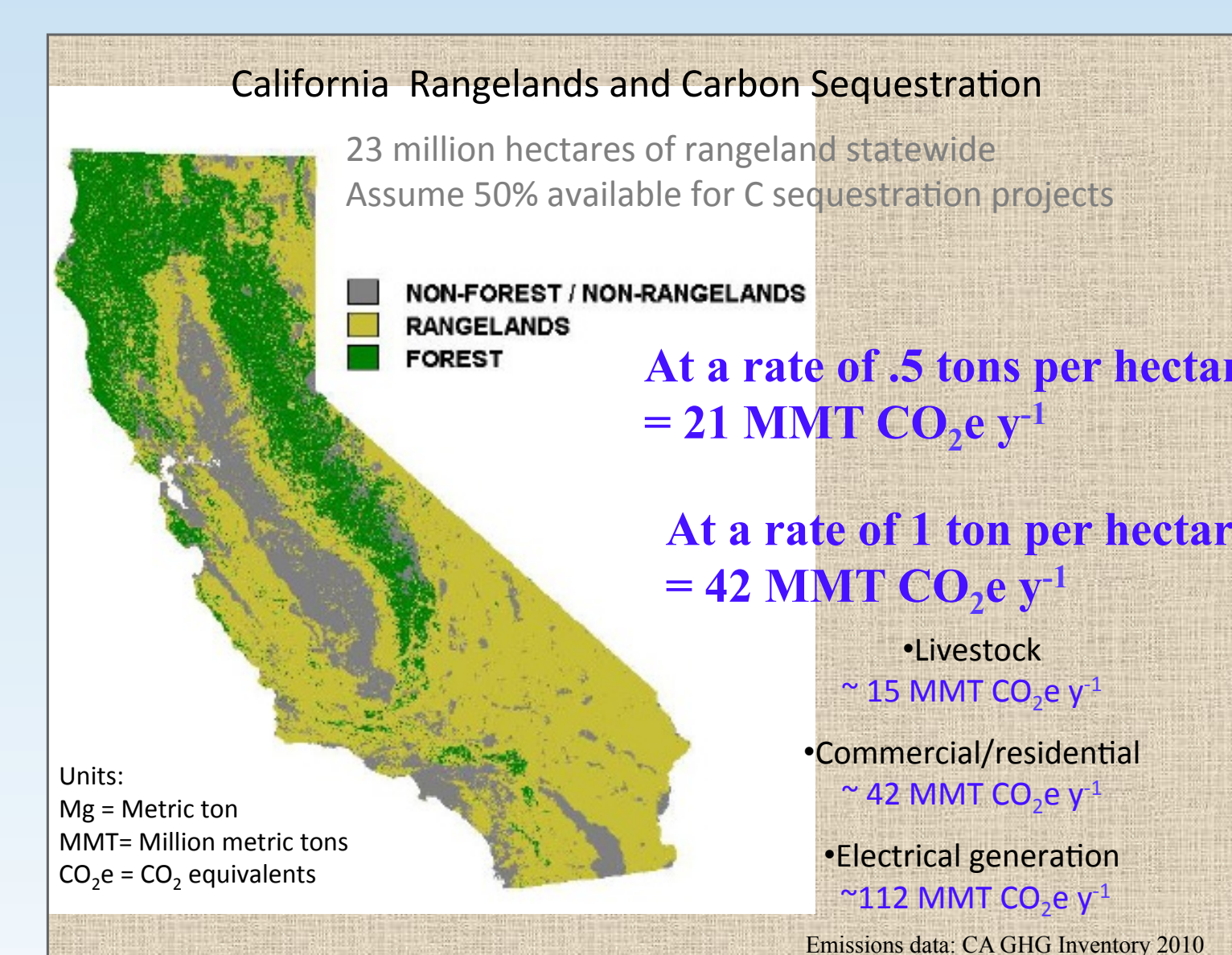
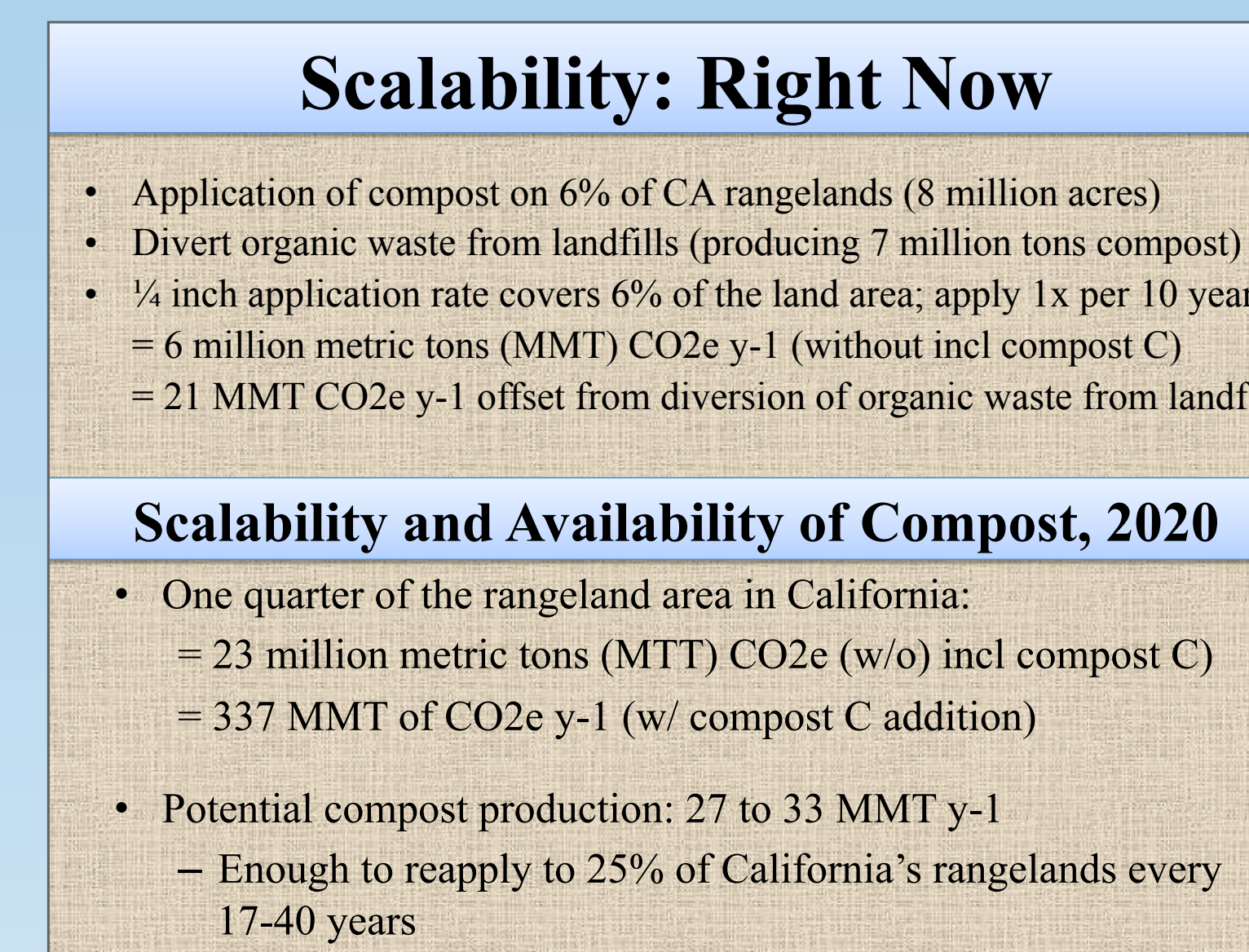
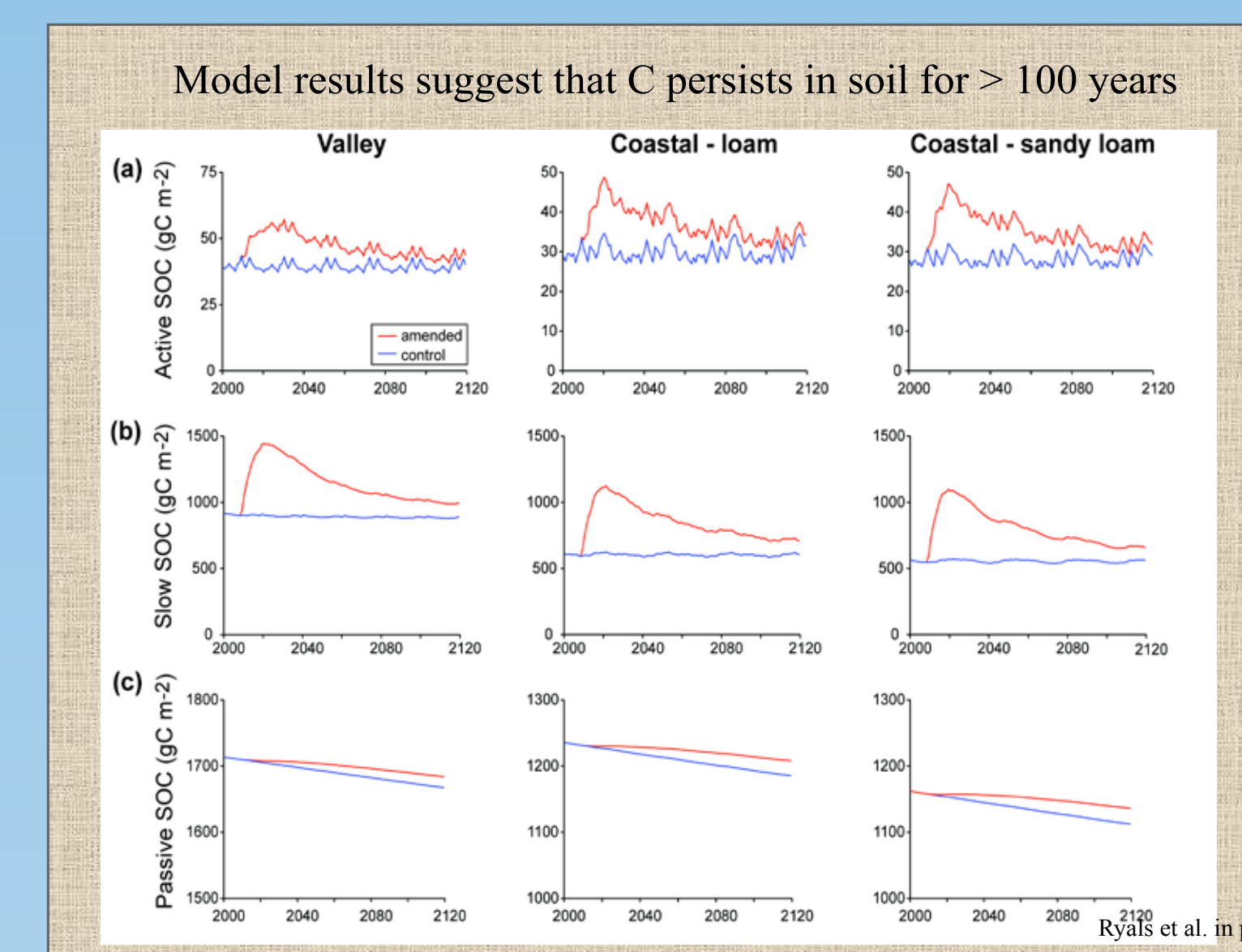
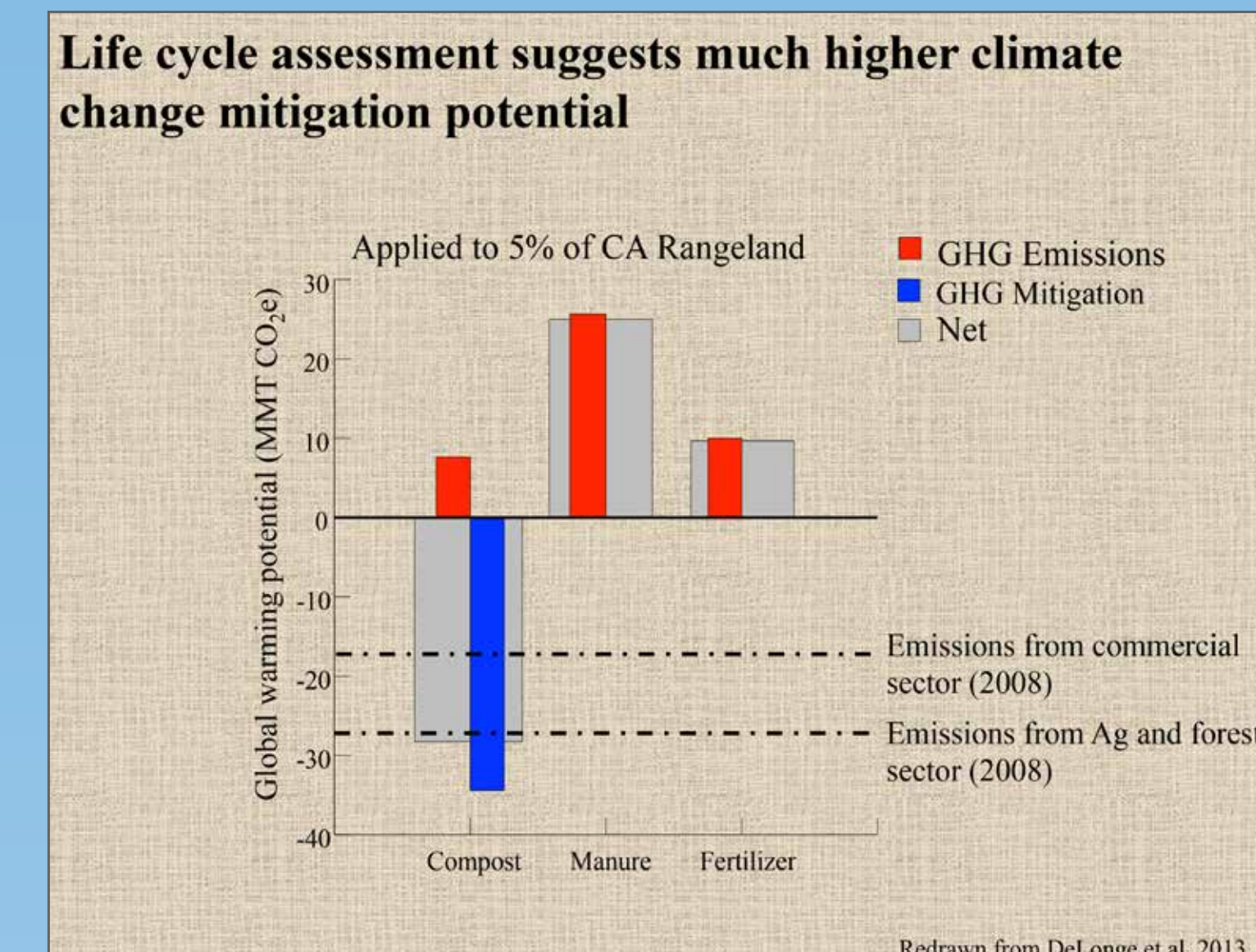
### Introduction – Climate, Carbon, and Soils



### Research and Findings



### Implications



### Implementation and Policy

